

# CH 3-150, Heating and cooling thermostat, Combitherm-2

Combitherm-2 **CH 3-150** is specially designed to thermostabilise materials at temperatures from  $-3^{\circ}\text{C}$  to  $+150^{\circ}\text{C}$  according to methods of analysis. To obtain useful functionality and decrease foot-print of instruments Combitherm-2 consists of 2 independent cooling and heating plug-in thermoblocks combined in a common electronic circuit board as well as inside a common external body. The left part of the front keyboard is responsible for setting parameters for cooling plug-in blocks and the right part — for heating plug-in blocks. Both of them are regulated independently and can realize up to 16 programs including temperature and time in each program. Peltier technology is used for cooling below room temperature; PCB is used for heating till  $+150^{\circ}\text{C}$ .

Separation of cooling and heating parts from each other increases durability of the instrument and speed of temperature changing after setting a new program.



## Heating block specifications:

Temperature setting range	$+25^{\circ}\text{C} \dots +150^{\circ}\text{C}$
Temperature control range	$5^{\circ}\text{C}$ above ambient ... $+150^{\circ}\text{C}$
Setting resolution	$1^{\circ}\text{C}$
Stability	$\pm 0.1^{\circ}\text{C}$

## Cooling block specifications:

Temperature setting range	$-3^{\circ}\text{C} \dots +20^{\circ}\text{C}$
Temperature control range	$23^{\circ}\text{C}$ below ambient ... $5^{\circ}\text{C}$ below ambient
Setting resolution	$0.1^{\circ}\text{C}$
Stability	$\pm 0.1^{\circ}\text{C}$

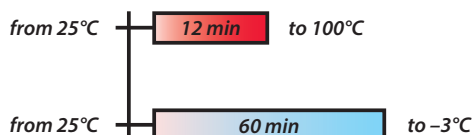
## General specifications:

Digital timer with sound alarm	1 min–99 hrs 59 min (increment 1 min)
User adjustable programs (temperature and time)	16 (heating) +16 (cooling)
Display	LCD
Overall dimensions (W×D×H)	295×285×220 mm
Weight, not more	6 kg
Heating power	500 W
Nominal operating voltage	230 V, 50/60 Hz
Power consumption	420 W (1.8 A)

## Catalogue number:

<b>CH 3-150</b> without blocks	BS-010418-AAA
<b>B2-50</b>	BS-010418-AK
<b>B10-16</b>	BS-010418-BK
<b>B6-25</b>	BS-010418-CK
<b>B23-1.5</b>	BS-010418-DK

## Heat up and cool down times for CH3-150

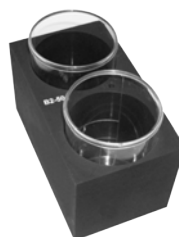


## Interchangeable thermoblocks:

<b>1</b> B2-50	2 sockets	$\varnothing$ 50 mm
<b>2</b> B10-16	10 sockets	$\varnothing$ 16 mm
<b>3</b> B6-25	6 sockets	$\varnothing$ 25 mm
<b>4</b> B23-1.5	23 sockets	1.5 ml microtubes

*Different block types can be provided on request*

**1** B2-50



**2** B10-16



**3** B6-25



**4** B23-1.5

