

# Real-Time PCR Detection System



## LineGene 9600 Plus

Real-Time PCR Detection System



Line-Gene 9600Plus is the newest product of Bioer's Real-Time PCR detection system family. Based on Line-Gene 9600's large sample capacity, wide temperature range and multi-channels, Line-Gene 9600 Plus provides brand-new & humanized running and operation interface for better operating experience.

Line-Gene 9600 Plus adopts Ferrotec specially-made Peltier, advanced fiber optic technology, new global wide-range power supply, the unique patented block dissipation technology and bottom detection mode, which provides better heating/cooling rates, temperature accuracy, uniformity and stability. Line-Gene 9600 Plus has up to 96 sample capacity and fast speed of dual-color scanning, and the design of 5 channel detection also covers the whole fluorescence detection wavelength.

Newly-designed automatic hot-lid without manual operation ensures constant pressure for various tube heights. This auto hot-lid mode could be easily integrated into various automatic systems. Its Windows tablet computer and new touch screen brings excellent operating experience.

Newly-improved Line-Gene 9600 Plus Real-Time PCR detection system can satisfy various clients' requirement either for research or clinical use.

# Real-Time PCR Detection System

# LineGene 9600 Plus

ALL FOR YOU!  
**The best 20** 



Using a new generation Ferrotec Peltier cooler inside, more efficient, more stable and triple working life.



Up to 96 samples, fit for most full skirted plate, 12x8- strips and 96x0.2ml tubes.



New design of the 3D Hot-lid, constant pressure, auto-adjusting, it can effectively prevent the reagent evaporation. To the hot-lid, selectable working temperature, auto opening/closing. The design of the front switch makes it more secure.



PC-connection achieved by blue tooth transformer easily, scientifically and wirelessly.



Patented block dissipation technology brings on excellent performance in heating and cooling rate.



Long-life LED light source, paired excitation, dual high-sensitivity PMT synchronous detection.



Highly temperature control accuracy and stability as Bioer's tradition.



Automatic brake function of internal motor, keep the components save, improve the reliability of transportation.



Using TAS technology with is proprietary, to avoid the edge effect of block heat conduction available.



As the Hub, can be used in the automatic system software including HIS, CIMS.



One finger operation (Using tablet)



Up to 5 individual filters, cover all wavelength of common used dye.



Maximum 36 °C temperature gradient control function, with calculator.



Automatically temperature control mode (Tube/Block) switch based on sample volume.



Different connection box to select, including USB and blue tooth, easy to connect PC



Professional analysis software, works well for absolute quantification, relative quantification, SNP, HRM.



Bottom detection mode avoids interference between wells and insures result more reliable.



Wide block temperature range: 4-105 °C, with SOAK low temperature conservation function.

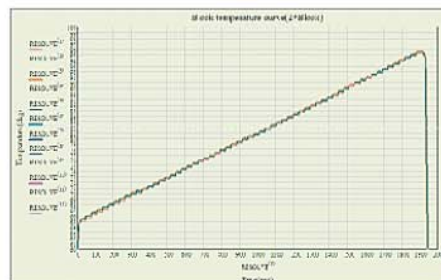
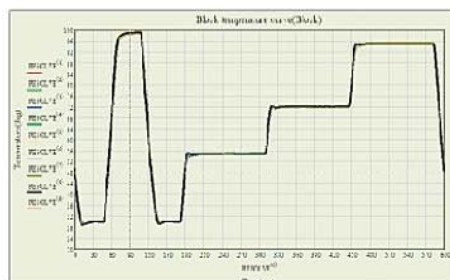


Both entire plate and designated line scan mode. Only 5.5s for a 96 wells dual-color scanning.



Global wide power supply range with PFC function.

## Highly Temperature Control Accuracy & Stability

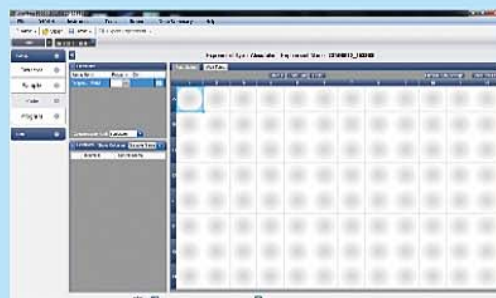


## ◆ Interface Introduction

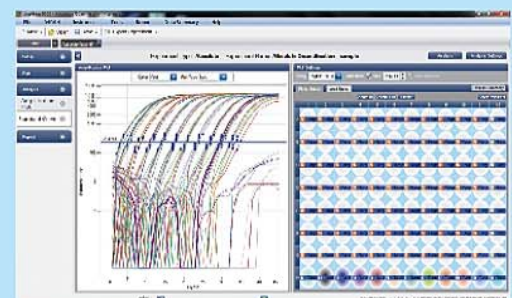
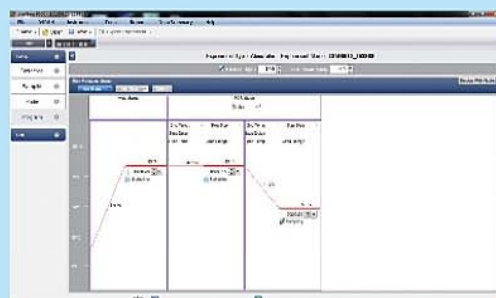
### >> Program Interface



### >> Operation Interface



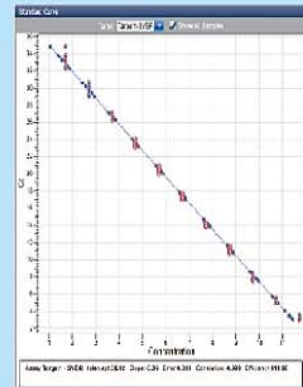
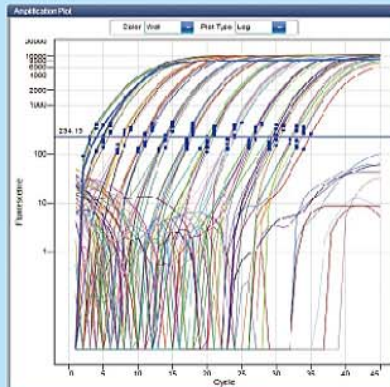
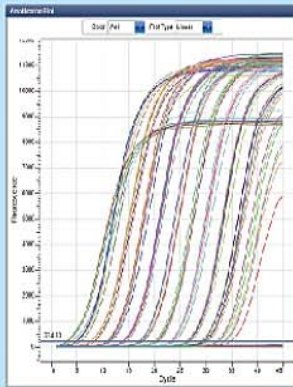
### >> Setting Interface



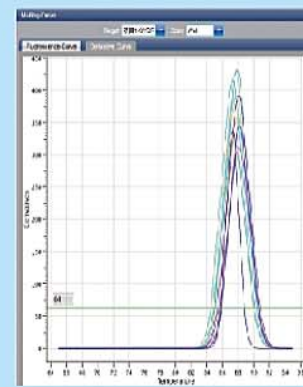
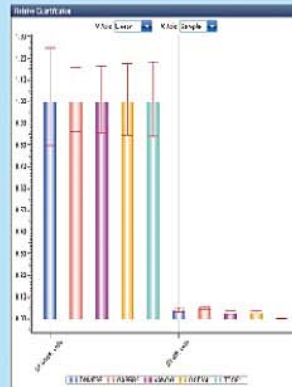
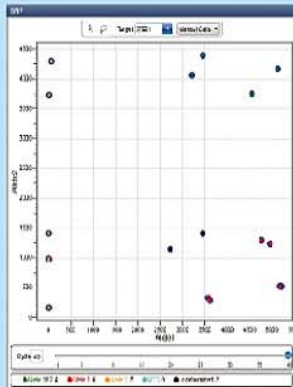
# Real-Time PCR Detection System

## ◆ Interface Introduction

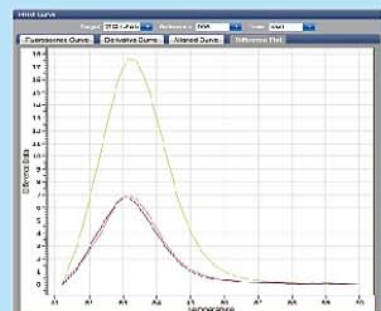
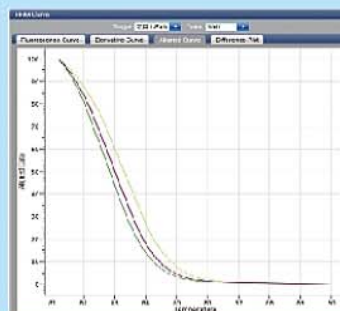
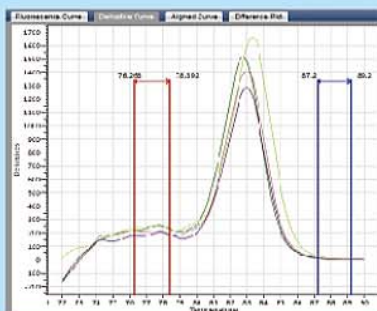
### >> Absolute Quantification



### >> SNP, Relative Quantification, Melting



### >> HRM



## Real-time PCR Detection System LineGene 9600 PLUS Series

Name	LineGene Plus
Model	FQD-96A
Sample Capacity	96×0.2ml(Bottom Transparent)
Dynamics Range	1~10 <sup>10</sup> Copies
Excitation Wavelength	300~800nm
Emission Waveleth	500~800nm
Detected Fluorescence	F1:FAM,SYBR Green I ; F2:VIC,HEX,TET,JOE,Cy3, TAMARA; F3:ROX,TEXAS-RAD, F4:CY5, Quasar-670; F5:CY5.5,Quasar-705
Block Temp. Range	4~105 °C (Minimum Increment: 0.1 °C) SOAK Low Temp. Conservation Function
Heating/Cooling Rate	4.0 °C /s (max)
Temp. Control Accuracy	≤±0.1 °C
Temp. Fluctuation	≤±0.1 °C
Temp. Uniformity	≤±0.3 °C
Temp. Control Mode	BLOCK/Tube Simulation Mode(Automatic Control Based On Sample Volume)
Sample Volume Range	5~100μL
Gradient Temp. Range	1~36°C
Hot-lid Temp. Range	30~110 °C (Adjustable, Default 105 °C, Automatic Hot-lid)
Fluorescence Detection Repeatability	5 %
Scan Mode	Entire Plate or Designated Line
Program	Max 20 Segments for Each Program, Max 99 Cycles
Operation Mode	Continuous
Scan Period	5.5s
Feature Function	Absolute Quantification, Relative Quantification, SNP Analysis, Data Automatic Analysis, Melting Curve Genotyping, Gradient, HRM, Multi-channel Crosstalk Correction, Background Correction, Automatic Gain, Customized Parameters.
Operation System	Microsoft: Windows XP/windows vista/windows 7/windows 8 Software: Excel2000/2002/2003/2007/2012
PC Configuration	Memory: 512M; Hard Disk:10GB; CPU: Pentium® 4 ;Virtual Memory: ≥1000MB
Power Supply	100-240V~ 50/60Hz 600W
Dimension(L×W×H)	410mm×386mm×352mm
Socket authentication	USB Adapter, Bluetooth Adapter
Tablet	Ferrotec Pelitier/CE/MET/RoHS2/PICC product quality liability insurance Microsoft Surface 2 pro