

MS SafeBlue Electrophoresis System

48

► MBE-150-PLUS



New
FC CE

► MBE-150



New
FC CE

■ The Major Science SafeBlue Electrophoresis System is recognized as an unique electrophoresis system equipped with very powerful specifications to cover the majority of electrophoresis and power supply demands. The SafeBlue Electrophoresis System uses blue light LEDs to allow for immediate visualization of DNA/RNA bands while running agarose electrophoresis gels. The innovative and space-saving design combines power supply, gel tank, blue light illumination source, and amber filter lid. The complete unit comes with three gel trays, 150 x 70mm, 150 x 100mm, and 150 x 150mm. The system is RoHS and CE compliant for environmental and safety concerns. The system is also offered in different packages to accommodate varying budgets and requirements.

This product is offered as a complete system for the user to cast, run, and observe electrophoresis process, including:

MBE-150-PLUS

- 1 x SafeBlue Electrophoresis System Base Unit
- 1 x SafeBlue Electrophoresis Tank
- 1 x Filter Lid
- 1 x Power Cord

MBE-150

- 1 x SafeBlue Electrophoresis System Base Unit
- 1 x Power Adaptor
- 1 x Power Cord

► Features

- Detachable electrophoresis gel tank and base unit
- Entire ME15 gel tank can be fitted perfectly on top of viewing platform
- Compatible with gel trays 15 x 15cm or smaller
- Gel tank or UV tray can directly be placed on the viewing platform for gel observation
- Suitable for EtBr, Midori Green Advanced, SYBR Safe/Gold, SYBR Green I/II, SafeView, HealthView, Gel Red/Green, and SERVA DNA Stain Clear G dyes
- Time saving with immediate visualization of DNA/RNA band migration
- Blue light LEDs do not require UV safety equipment
- Compatible with MBE-IMG Image System (see page 94)
- Optional tray holders are available



- Capable of easy, safe and direct viewing your DNA bands from the blue LED lights.



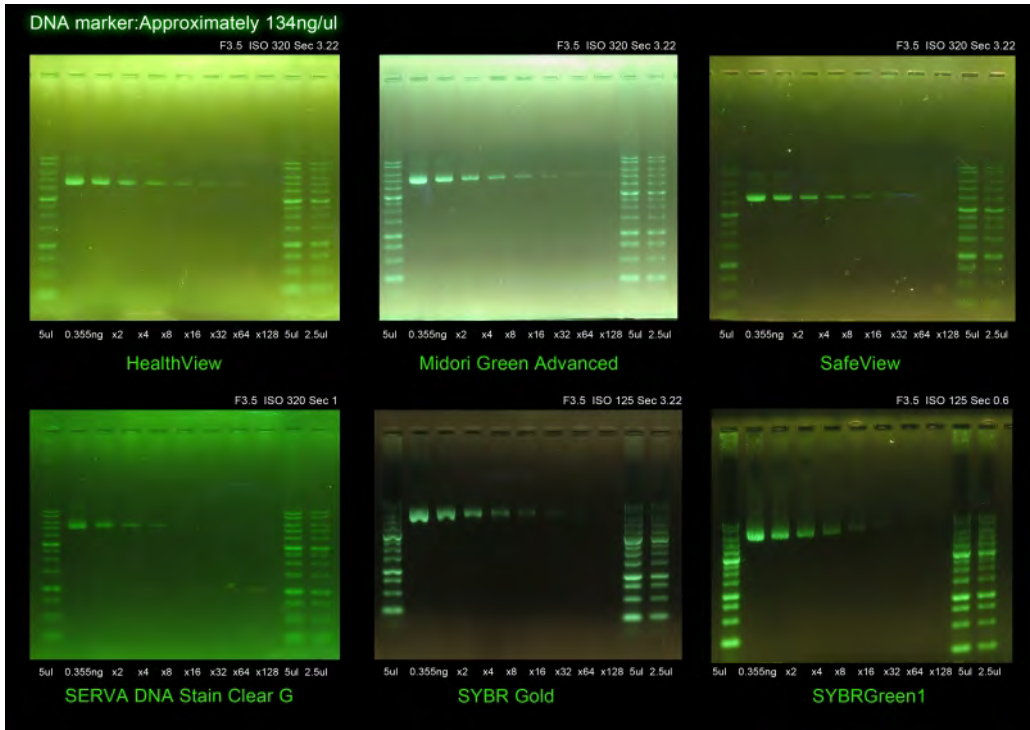
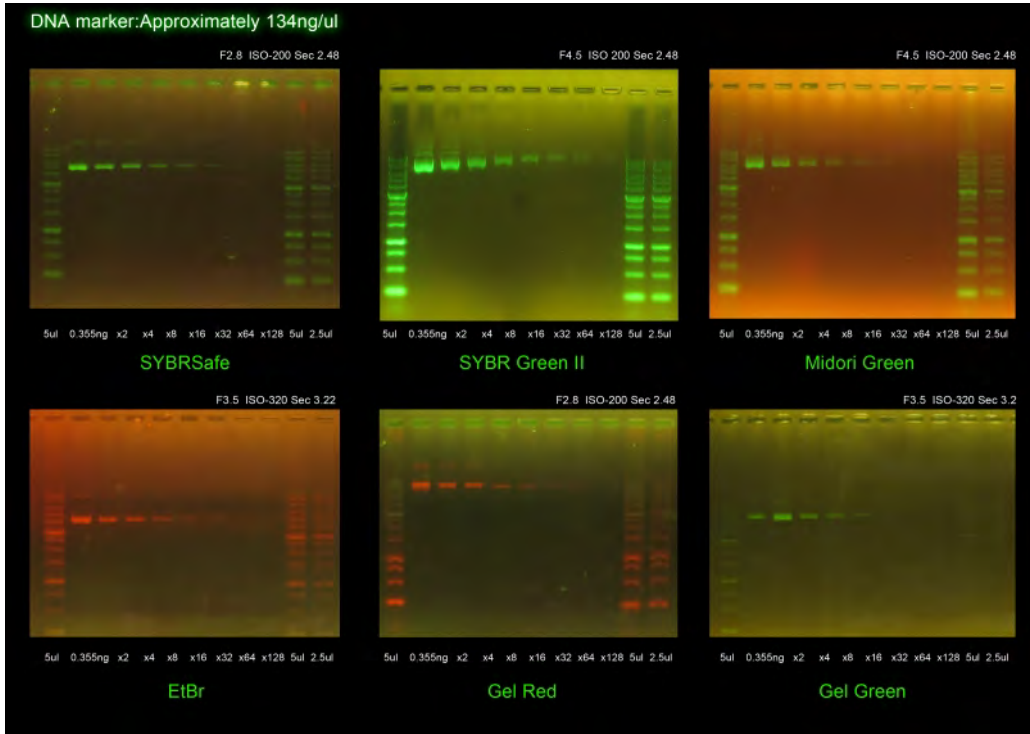
► Specifications

Cat. No.:	MBE-150
Output Voltage / Inc.	10 - 150V / 1V
Output Current / Inc.	10 - 300mA / 1mA
Max. Power	30W
Operating Mode	Constant voltage or current
Timer	1 - 999 minutes with alarm, continuous
Safety Device	No load detection
Crossover	Yes
Blue Light Wavelength	470nm
LED life	9000 hours
Operating Temperature	Ambient to 40°C
Dimension (W x L x H)	293 x 200 x 80mm
Weight	Approx. 1.1 kg
Construction Material	Polycarbonate housing and aluminum base plate
Power Adaptor	Input : 100-240VAC, 50/60Hz, 1.4A Output: 15VDC, 4.0A, 60W max.

Cat. No.:	MBE-TANK
Unit Dimension (W x L x H)	265 x 175 x 90mm
Gel Dimension (W x L)	150 x 70mm , 150 x 100mm , 150 x 150mm
Maximum Sample	70 for 150 x 70mm Tray (2 x 35 sample combs) 140 for 150 x 100mm Tray (4 x 35 sample combs) 210 for 150 x 150mm Tray (6 x 35 sample combs)
Buffer Volume	500ml
Construction	Acrylic (Injection molded construction) Durable, leak proof environment for complete safety and long life
Cassette Type Electrode	Inexpensive, easy to replace
Electrical Safety	Lid can only be fastened in one way Upon lid removal, power is disconnected from buffer chamber
Rapid Casting Gel	Use casting dams

Cat. No.:	MBE-LID-Y1
Dimension (W x L x H)	176 x 268 x 35mm
Filter Type	Amber filter(ideal for EtBr, Midori Green Advanced, SYBR Safe/Gold SYBR Green I/II, SafeView , HealthView, Gel Red/Green, and SERVA DNA Stain Clear G dyes)
Lid Filter Wiper	Used to remove condensation
Construction Material	Polycarbonate

► DNA Quantification Comparison

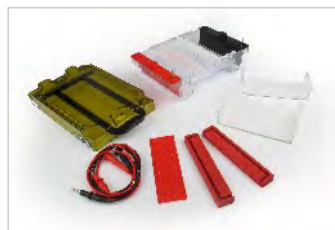


► Ordering Information

MBE-150-PLUS	Complete SafeBlue Electrophoresis Systems , including SafeBlue base unit , electrophoresis gel tank , amber filter lid and red/black cables
MBE-150	SafeBlue base unit
MBE-TLC	Package of electrophoresis gel tank , amber filter lid , and red/black cables
MBE-TANK	Electrophoresis gel tank for SafeBlue System (without lid and red/black cables)
MBE-150-CABLE	Red/black cables
MBE-LID-Y1	MBE-150 lid with amber filter
MBE-G-Y1	Amber filter viewing glasses (optional)
MBE-150-3	Base unit platform protective film
ME15-UV15-TH01	ME15-UV15 Tray Holder , 2 cuts , cut size 109.5 x 60.5mm (for MJ-105 trays)
ME15-UV15-TH02	ME15-UV15 Tray Holder , 1 cut , cut size 130.5 x 122.5mm



► MBE-150



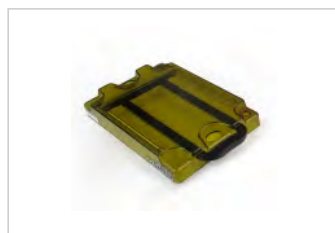
► MBE-TLC



► MBE-TANK



► MBE-150-CABLE



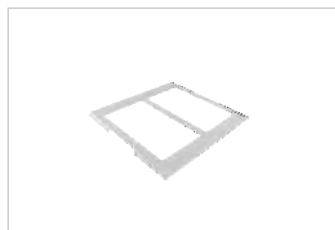
► MBE-LID-Y1



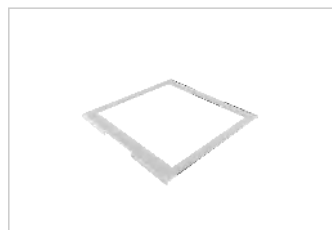
► MBE-G-Y1



► MBE-150-3



► ME15-UV15-TH01



► ME15-UV15-TH02

► Bundle Packages

MBE-CP-01	Package of MBE-150-PLUS and MBE-IMG-CA
MBE-CP-02	Package of MBE-150-PLUS and MBE-IMG-CM

* Please see page 94 for more information of SmartView Image System (MBE-IMG-CA/CM)



► MBE-CP-01



► MBE-CP-02