

THERMAL CYCLER



+90 312 220 22 80

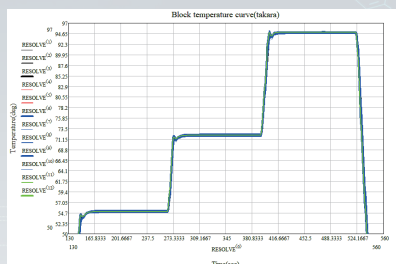
www.bmlabosis.com

bm@bmlabosis.com

Kızılırmak Mah. 1441. Cad. Meva İş Merkezi
No:41/8 Ankara/TÜRKİYE

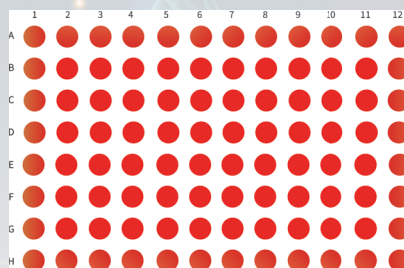


Product Features



► Fast ramping rate

Maximum to 5.5/s, saving valuable experimental time

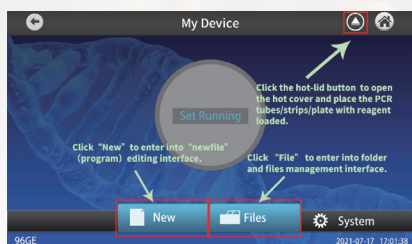


► Stable Temperature Control

Industrial semiconductor temperature control system leads to accurate temperature control and great uniformity between wells.

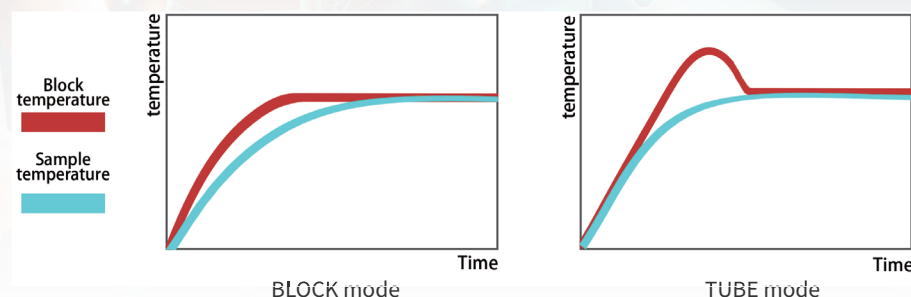
► Various functions

Flexible program setting, adjustable time, temperature gradient, and temperature change rate, built-in Tm calculator.



► Easy to use

Built-in graph-text quick operation guide, suitable for operators with various backgrounds.



► Dual-mode temperature control

TUBE mode automatically simulates the actual temperature in the tube according to the reaction volume, which makes the temperature control more accurate; The BLOCK mode directly displays the temperature of the metal block, applicable to the small volume reaction system, and takes shorter time in same program

Software Interface



Product Comparison



FC-96GE

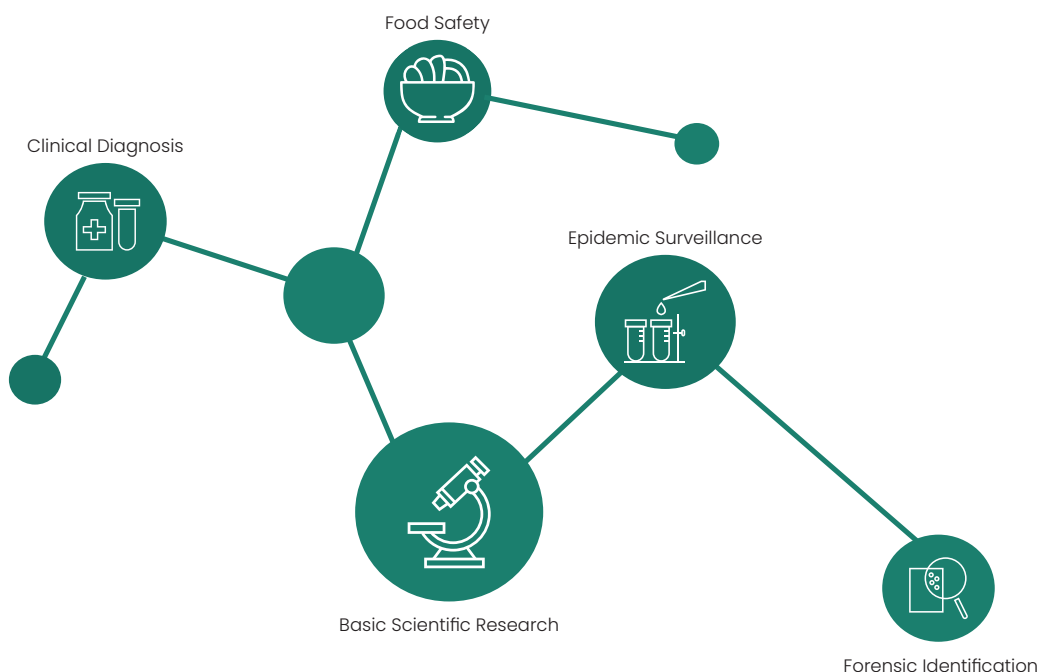
- › Electric hot lid, one-button lid opening design, ensure perfect fit between hot lid and consumables
- › 75 ° turnable 10.1 inch screen, foldable during standby
- › Faster ramping rate, more accurate temperature control.



FC-96B

- › Manual hot lid, high-strength mechanical buckle, not easy to wear.
- › Small size, light weight, suitable for various complex experimental environments.
- › Small size, light weight, suitable for various complex experimental environments.
- › Unique rear air outlet design, multiple machines can be placed side by side without difficult heat dissipation.

Application Scenario





Product Parameter

Model	FC-96GE	FC-96B
Sample volume and consumable type	96-well×0.2 mL (Half-skirted plate, Non-skirted plate; 12×8 strip tubes, 8×12 strip tubes,single tube)	96-well×0.2 mL (Full-skirted plate, half-skirted plate,Non-skirted plate; 12×8 strip tubes, 8×12 strip tubes, Single tube)
Technology program	Thermoelectric semiconductor technology	
Monitor	Color touch screen (10.1 inch)	Color touch screen (7 inch)
Screen adjustability	Rotatable (75° max)	Fixed
Block temperature range	4~99.9℃	
Maximum ramp rate	5.5℃/s	5℃/s
Temperature distribution	±0.20℃@550℃	±0.3℃@55℃
Gradient	36C max and accuracy is ±0.5℃	
Temperature accuracy	≤±0.1℃(@55℃)	
Temperature control mode	Block mode, Tube mode	
Ramp rate adjusting range	0.1~4.5℃/s	
Program capacity	Infinite	
Maximum cycle	99	
Time increase/decrease	0~9min59s, LongPCR is available	
Temperature increase/decrease	0~9.9℃, Touchdown PCR is available	
Auto pause/ Power-off protection	Available	
4℃ reservation	Available	
Real-time operation status display	Graph-text	
Hot lid temperature range	Room temperature + 5~110℃	
Hot lid temperature display accuracy	0.1℃	
Intelligent hot lid	Hot lid shut-off automatically when product is preserved at low temperature or program ends	
Communication interface	USB	
Voltage range	100~240VAC.50/60Hz	
Power (max)	600W	
Dimensions (D x W x H)	351×297×267.5 mm	280×187×190 mm
Net weight	17 kg	7 kg