

Glite 900BW

Easy to Use and Portable Gel Doc

- Ultralight and compact size ; low energy consumption
- Transmitted blue light for SYBR Safe stained and SYPRO Ruby stained gel image, etc.
- Transmitted white light for coomassie blue stained gel and scientific film, etc.
- Epi white light for HRP/DAB western blot image
- TV output for training/educational purpose



Glite 900 BW gel documentation system is one of the most compact gel documentation systems in the world. Carrying with powerful blue light source, Glite 900 BW is able to excite the most popular fluorescent eco-friendly branding dyes in the market and farther to capture the gel image for further analysis purpose. Moreover, equipped with white light source gel stained with colorimetric dyes and western blotting fixed with HRP/DAB treatment are easily digitized without any difficulty. With Glite 900 BW, you will experience what "following the instinct to capture the image" is.

Glite 900BW

Easy to Use and Portable Gel Doc



Specifications

Image Capture

Sensor	Color CMOS Sensor
Resolution	9M Pixels
Exposure Time	30ms~ 2sec
Image Types	JPEG
Image Storage	SD Card Storage
View Area	16 x 11.5cm (Fixed Lens) 16 x 9cm (Epi White)

Lens and Filter

Filter Turret	Manual-Driven, 2 position
Emission Filter	520nm Amber Filter

Lighting

Blue Light	470nm Blue LED Light
Epi White Light	LED White Light
White Backlight	LED White Light Panel

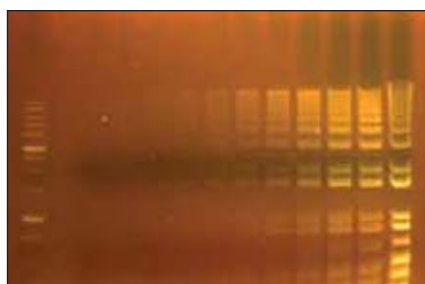
Interface

Display Panel	Build-in 2.7" TFT LCD
Image Storage	SD Card Storage
PC Connect	USB 2.0 (Card Reader)
Output	TV, Projector, Video printer

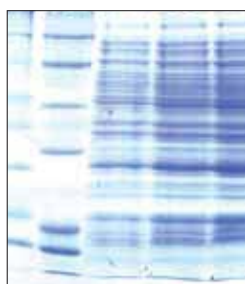
General Info

Power	AC Adaptor, 12V/1.5A
Dimension (WxHxD)	229x207x254mm
Weight	3.2Kg
Gel Tools	Gel tray, shovel amber field board, gel cutting knife
Certification	CE, FCC

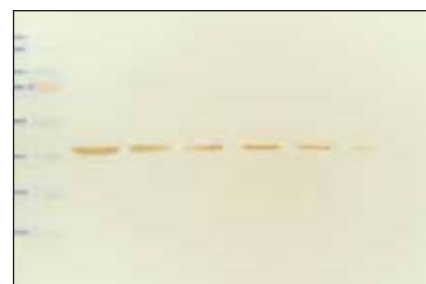
* PIE reserves the right to change specifications without prior notification



Midori Green (Blue)



Coomassie Blue Gel
(White Backlight)



Western Blot Image (Epi White)

For sales inquiries in other countries

Pacific Image Electronics Co.,Ltd.
10F-1, No.81, Hsin Tai Wu Rd. Sec.1,
Hsi Chih, Taipei Hsien 221 Taiwan

Tel : 886-2-2698-0369
Fax : 886-2-26980368
Email: sales@scanace.com.tw

For sales inquiries in USA & Canada

Pacific Image Electronics
367 Van Ness Way STE 612
Torrance, CA 90501

Tel : (310) 618-8100
Fax : (310) 618-8200
Email: sales_us@scanace.com

REŞİT GALİP CAD.74-7, 06700
ÇANKAYA, ANKARA, TÜRKİYE
T +90 312 447 2279
F +90 312 447 2207

E : bm@bmlabosis.com

BM Laboratuvar
Sistemleri

www.bmlabosis.com